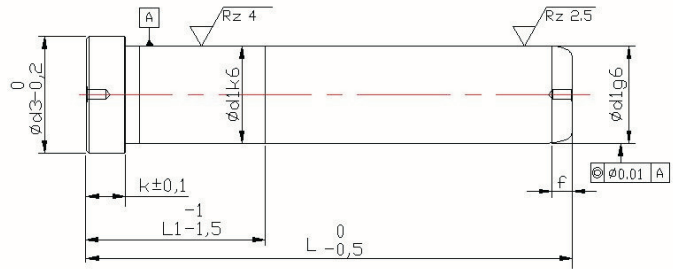




d1xL



f	k	d3	d1	L	L1	Kod	
3.5	3	11	8	40	16	A 66/8x40	
				50		50	
				63		63	
				80		20	80
				100		25	100
3.5	4	14	10	50	16	A 66/10x50	
				63	63		
				80	20	80	
3.5	6	16	12	50	16	A 66/12x50	
				63	63		
				80	25	80	
4	8	20	16	100	32	A 66/16x63	
				125		125	
				160		32	160
				200		40	200
				250		50	250
5	10	25	20	63	25	A 66/20x63	
				80		80	
				100		100	
				125		32	125
				160		40	160
5	10	25	20	200	50	A 66/20x63	
				250		250	
				315		80	315
				400		100	400
				500		125	500

f	k	d3	d1	L	L1	Kod	
5	12.5	32	25	80	25	A 66/25x80	
				100		100	
				125		32	125
				160		40	160
				200		50	200
5	12.5	40	32	250	50	A 66/32x100	
				315		315	
				400		40	400
				500		50	500
				630		63	630
8	16	48	40	160	50	A 66/40x160	
				200		200	
				250		63	250
				315		80	315
				400		100	400
10	16	58	50	160	63	A 66/50x160	
				200		200	
				250		80	250
				315		100	315
				400		125	400
12.5	16	70	63	200	63	A 66/63x200	
				250		250	
				315		80	315
				400		100	400
				500		125	500